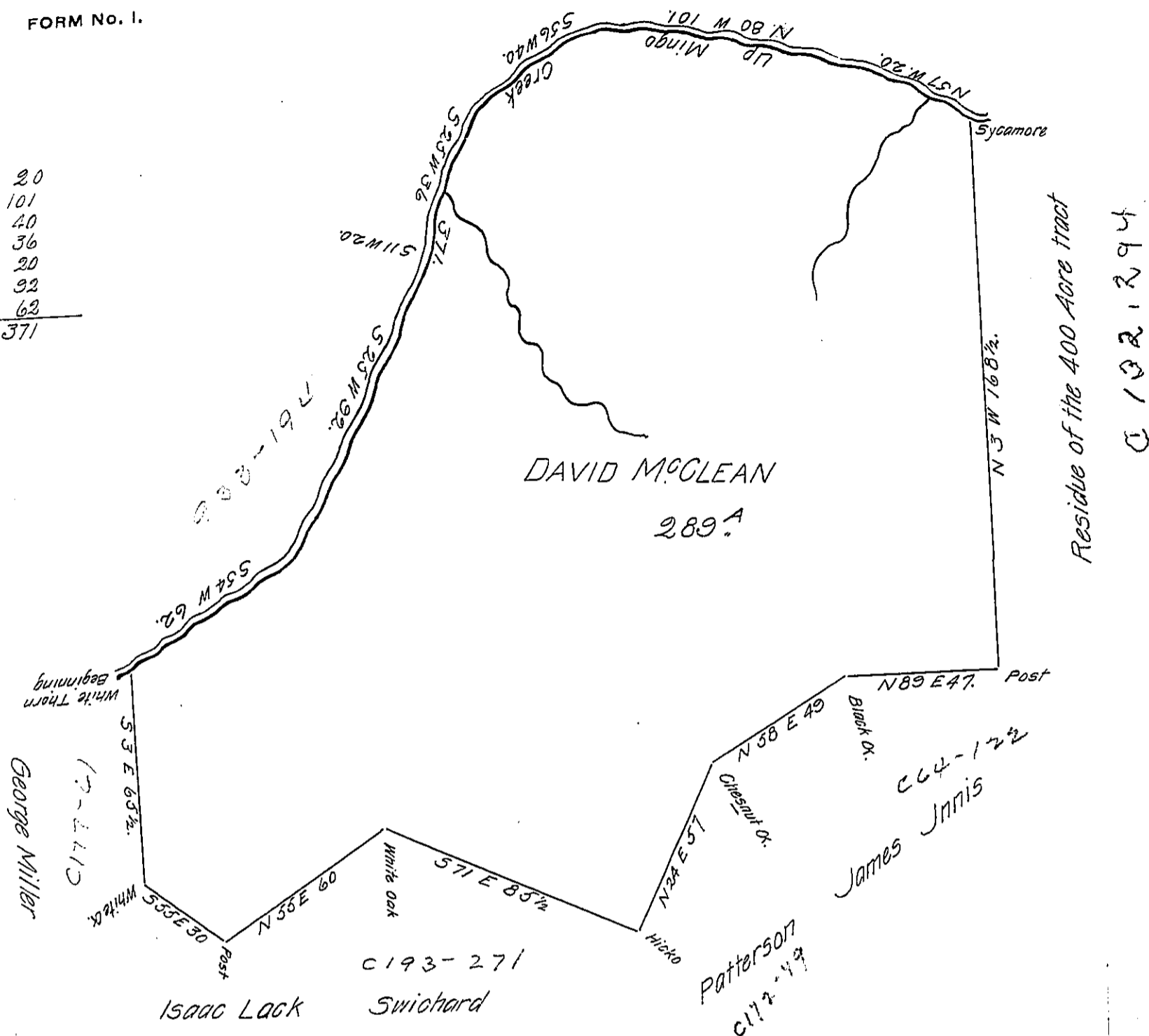


FORM NO. 1.

20  
 101  
 40  
 36  
 20  
 32  
 63  
 371



A Draught of a tract of Land Surveyed the 20<sup>th</sup> day of February 1805. by Virtue of a Certificate for 400 Acres of Land Granted to David McGlean by the Virginia Commissioners and duly entered with the County Surveyor as Appears by a Certified Copy in my possession Signed by Robert Woods Surveyor of Ohio County, Situate on Mingo Creek in Washington County Called Narrows Containing two hundred eighty Nine Acres Strict Measure.

Jonathan Leet, D.S.

To Samuel Cochran Esquire  
 Surveyor General of Pennsylvania }

Entry Dated 18<sup>th</sup> February 1780.

IN TESTIMONY that the above is a copy of the original remaining on file in the Department of Internal Affairs of Pennsylvania, made conformably to an Act of Assembly approved the 16th day of February, 1833, I have hereunto set my Hand and caused the Seal of said Department to be affixed at Harrisburg, this eighth day of May 1906.

*Loacn, Secretary*  
 Secretary of Internal Affairs.